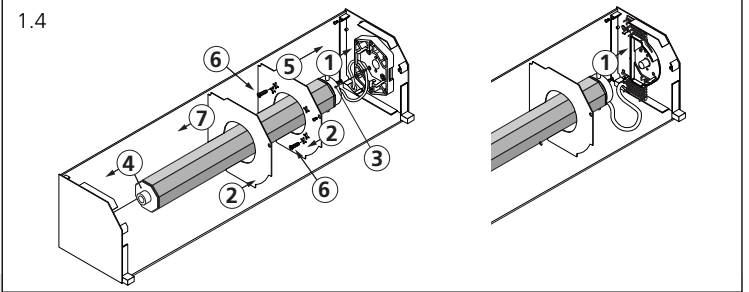
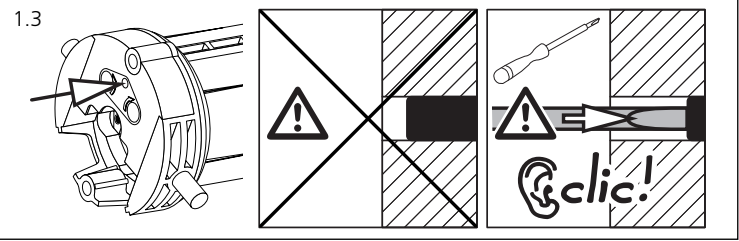
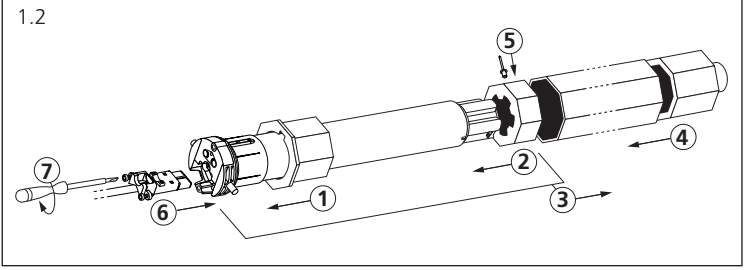


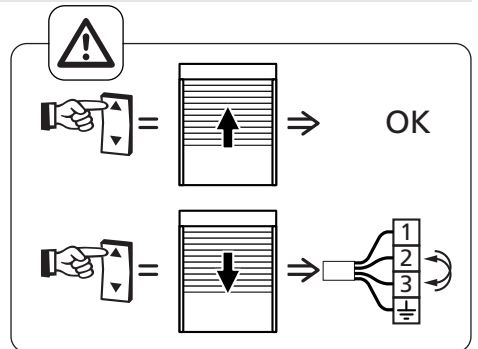
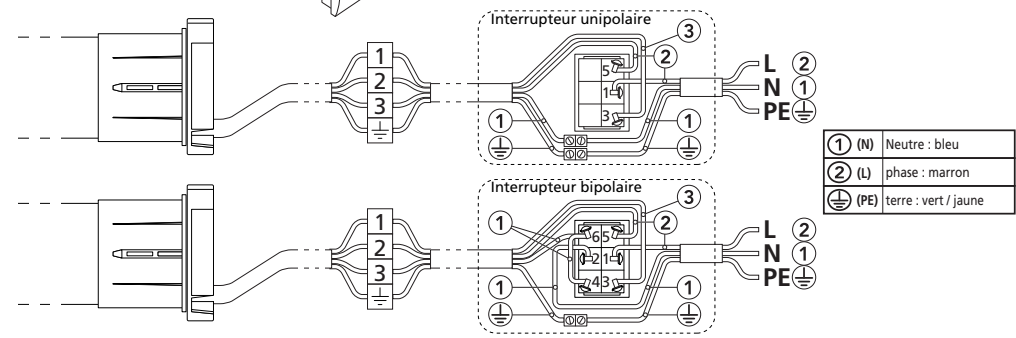
1 Montage MSR

1.1

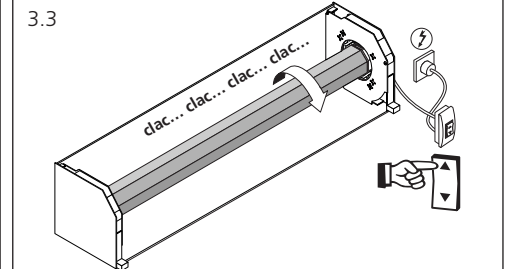
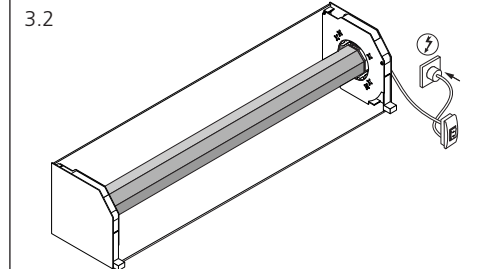
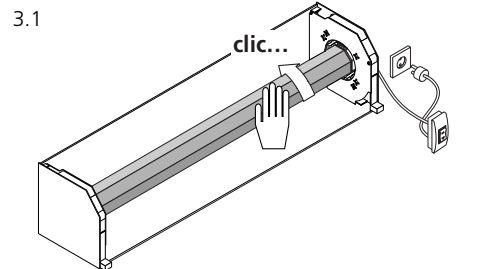
| MSR | L1 (mm) | L2 (mm) | L3 (mm) |
|-------------|---------|---------|---------|
| MSR - 6.17 | 506 | 491 | 521 |
| MSR - 10.17 | 506 | 491 | 521 |
| MSR - 17.17 | 526 | 511 | 541 |



2 Câblage : MSR +

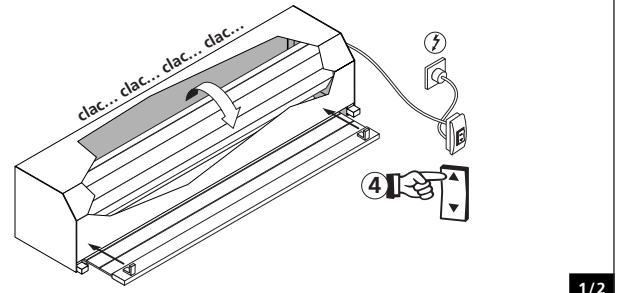
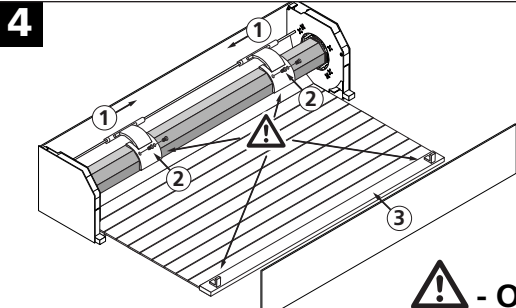


3 Initialisation des fins de course



- Tourner **manuellement** l'axe motorisé dans le sens correspondant à la **descente** du volet, vous devez entendre un, "clac". dans le cas contraire, refaire les opérations 1.3, 1.4 et 3.1

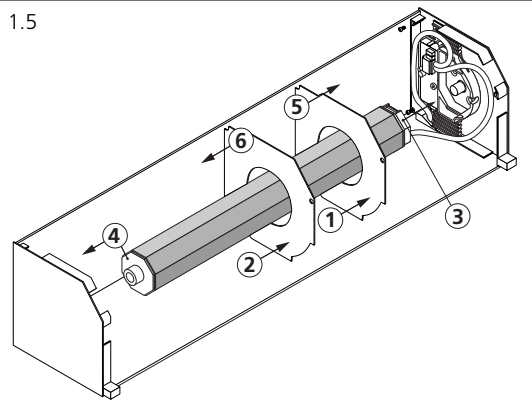
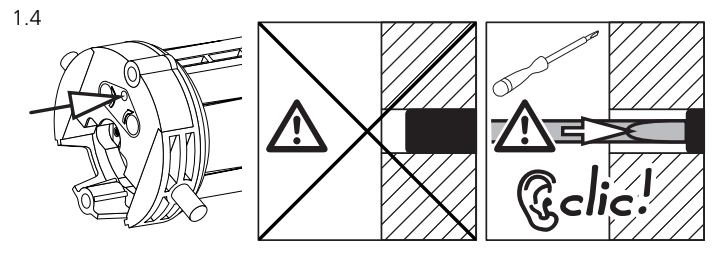
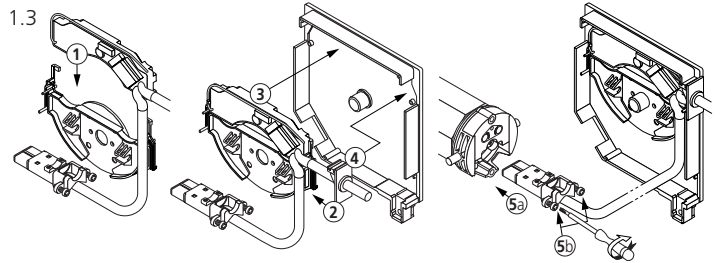
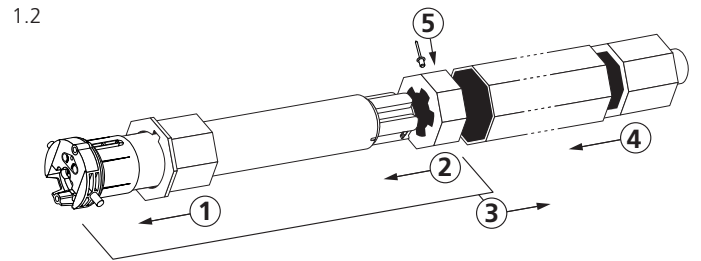
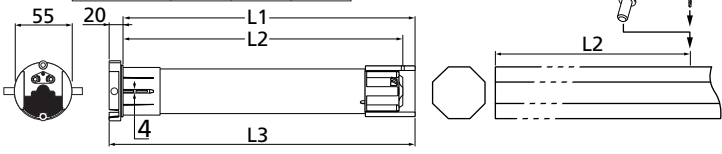
- Appuyer sur la touche ▲ jusqu'à ce que le moteur émette le son "clac...clac...clac..."



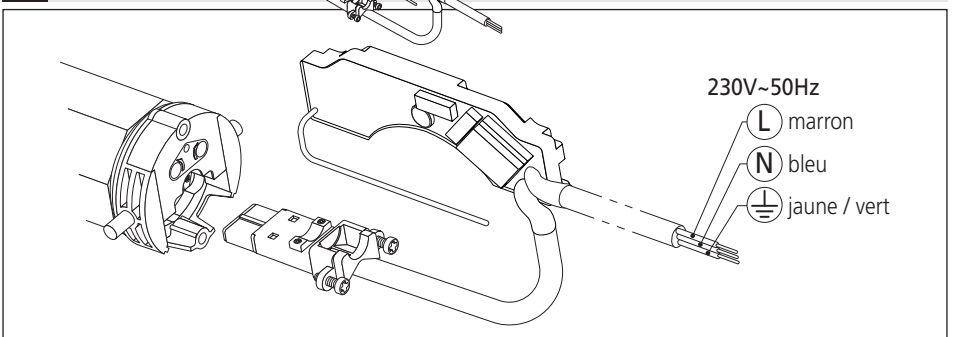
- Obligatoire.

1 Montage MSR +

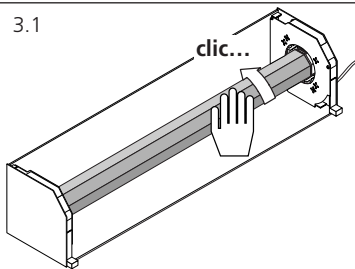
| MSR | L1 (mm) | L2 (mm) | L3 (mm) |
|-------------|---------|---------|---------|
| MSR - 6.17 | 506 | 491 | 521 |
| MSR - 10.17 | 506 | 491 | 521 |
| MSR - 17.17 | 526 | 511 | 541 |



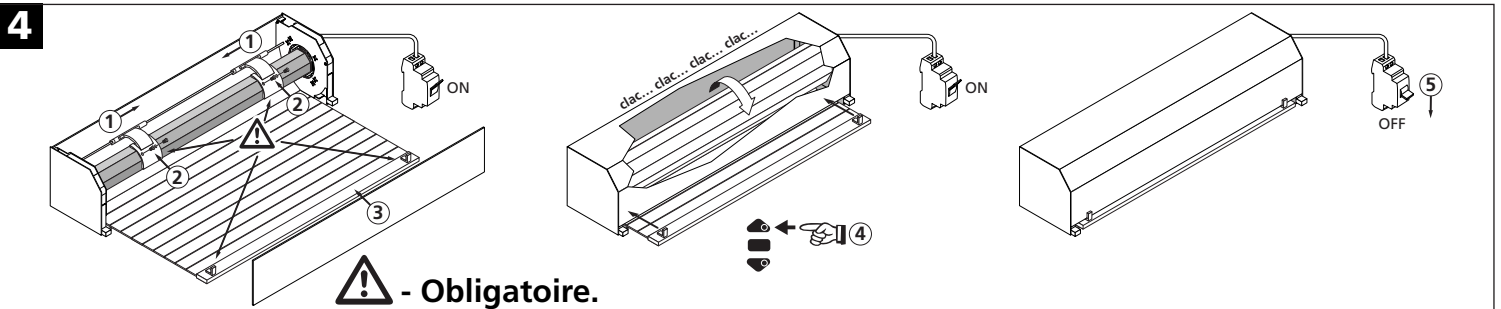
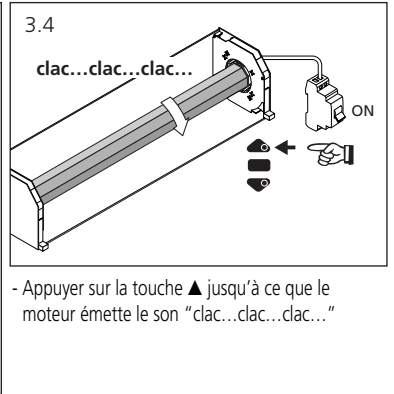
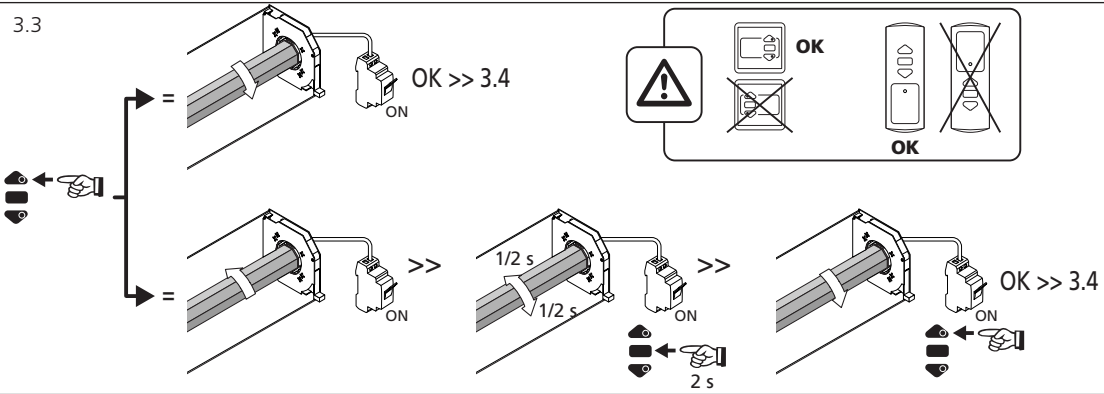
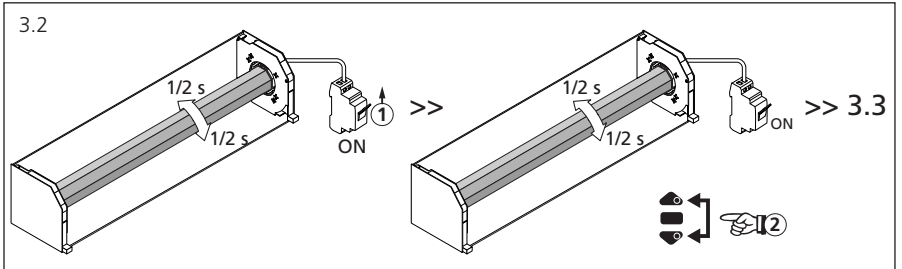
2 Câblage : MSR +



3 Initialisation des fins de course



- Tourner **manuellement** l'axe motorisé dans le sens correspondant à la **descente** du volet, vous devez entendre un, "clac". dans le cas contraire, refaire les opérations 1.4, 1.5 et 3.1



! - Obligatoire.

! - Programmation : se reporter à la notice du récepteur Hz.