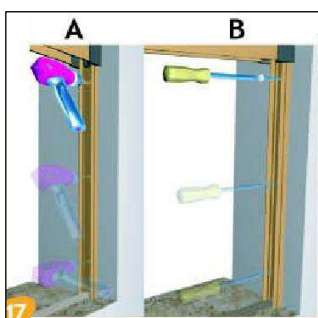
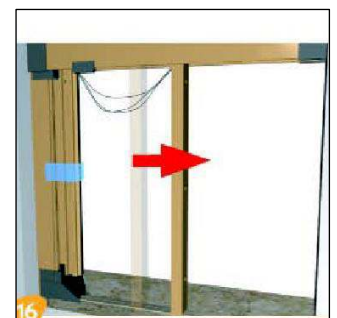
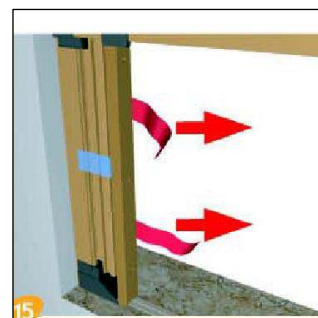
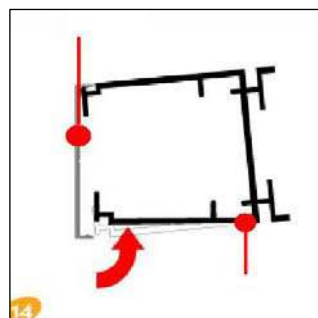
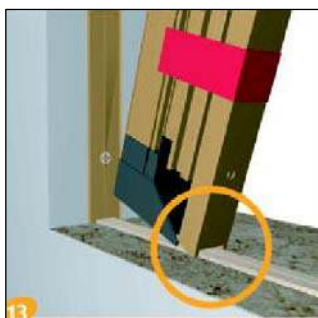
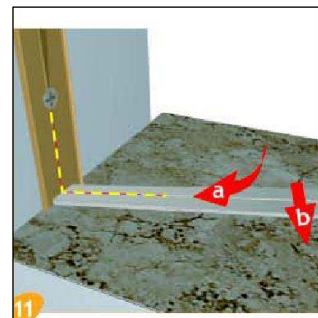
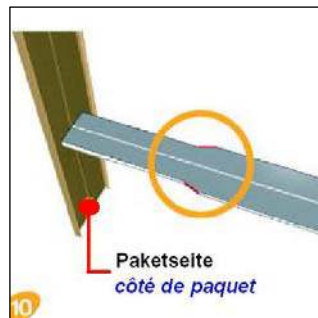
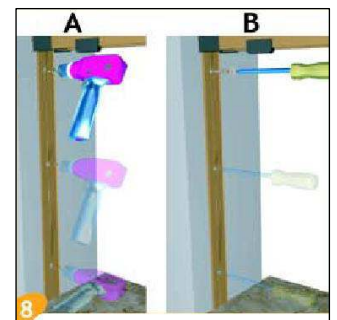
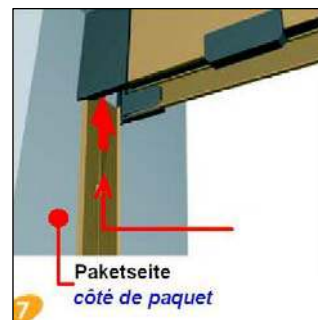
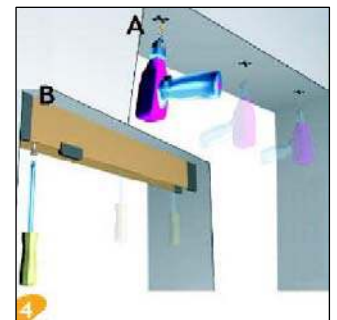
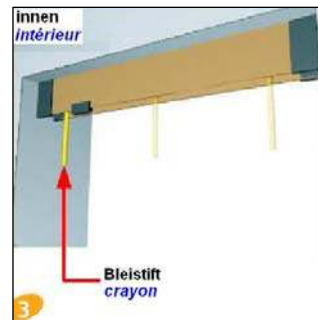
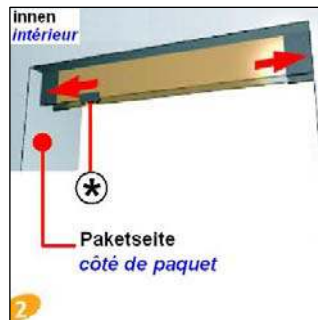
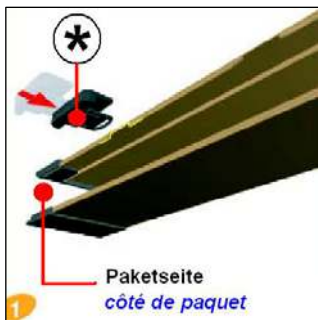
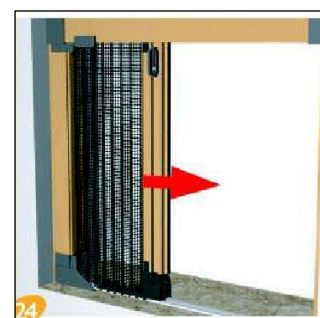
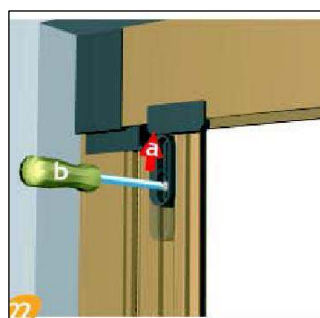
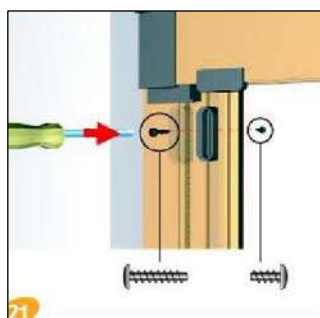


Montageanleitung NETKIK PLISSEE

Mode d'emploi NETKIK PLISSEE

- Montage 1-flügelig – mit 1 Paket:
Montage 1 battant – avec 1 paquet:

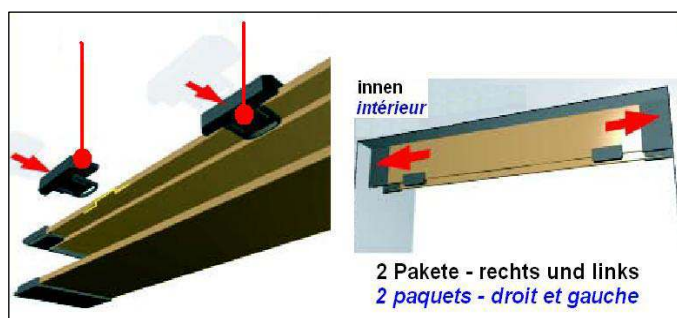




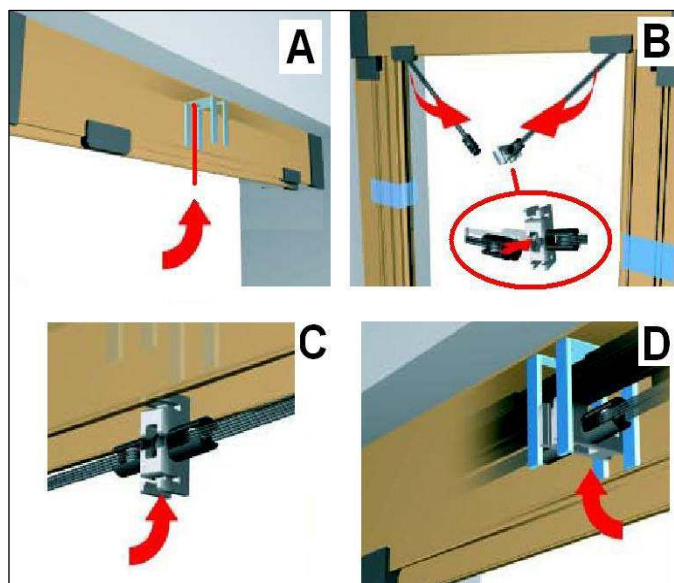
■ Montage 2-flügelig – mit 2 Paketen:
Montage 2 battants – avec 1 paquets:

→ Montage gleich wie oben, mit folgenden Differenzen;

1. Punkt 1 und 2;



2. folgende Schritte zwischen Punkt 14 und 15;



3. Ergibt am Schluss ein 2-flügeliges Plissee;

